

PurePath Console2

Installation Guide

Revision History

Date	Ver	Description	Author
03/09/2015	1.0	Initial version	Eric Bram

Contents

<i>PurePath Console2</i>	1
Revision History	2
1. Introduction.....	4
1.1 Installation	4
1.1.1 Installer .exe Installation	4
1.1.2 Plugin Installation	5
1.2 Plugin Upgrade	6
1.3 Uninstallation.....	6

1. Introduction

This document discusses the installation of PurePath Console2. It covers installing and updating both the installer .exe file as well as the .ppc2 plugins. The PurePath Console2 installer does not ship with any target plugins built-in, so any desired .ppc2 files must be included with the .exe file.

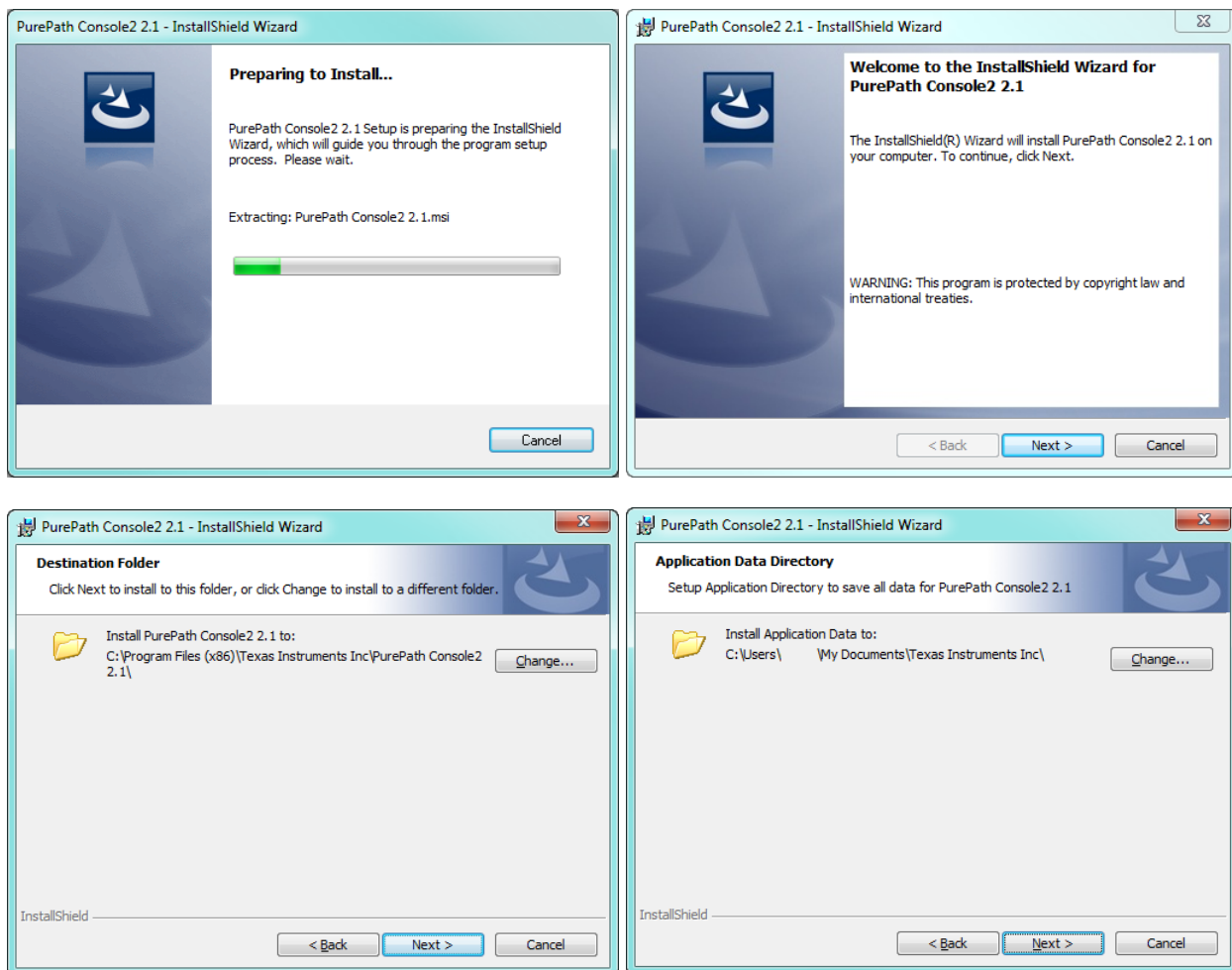
1.1 Installation

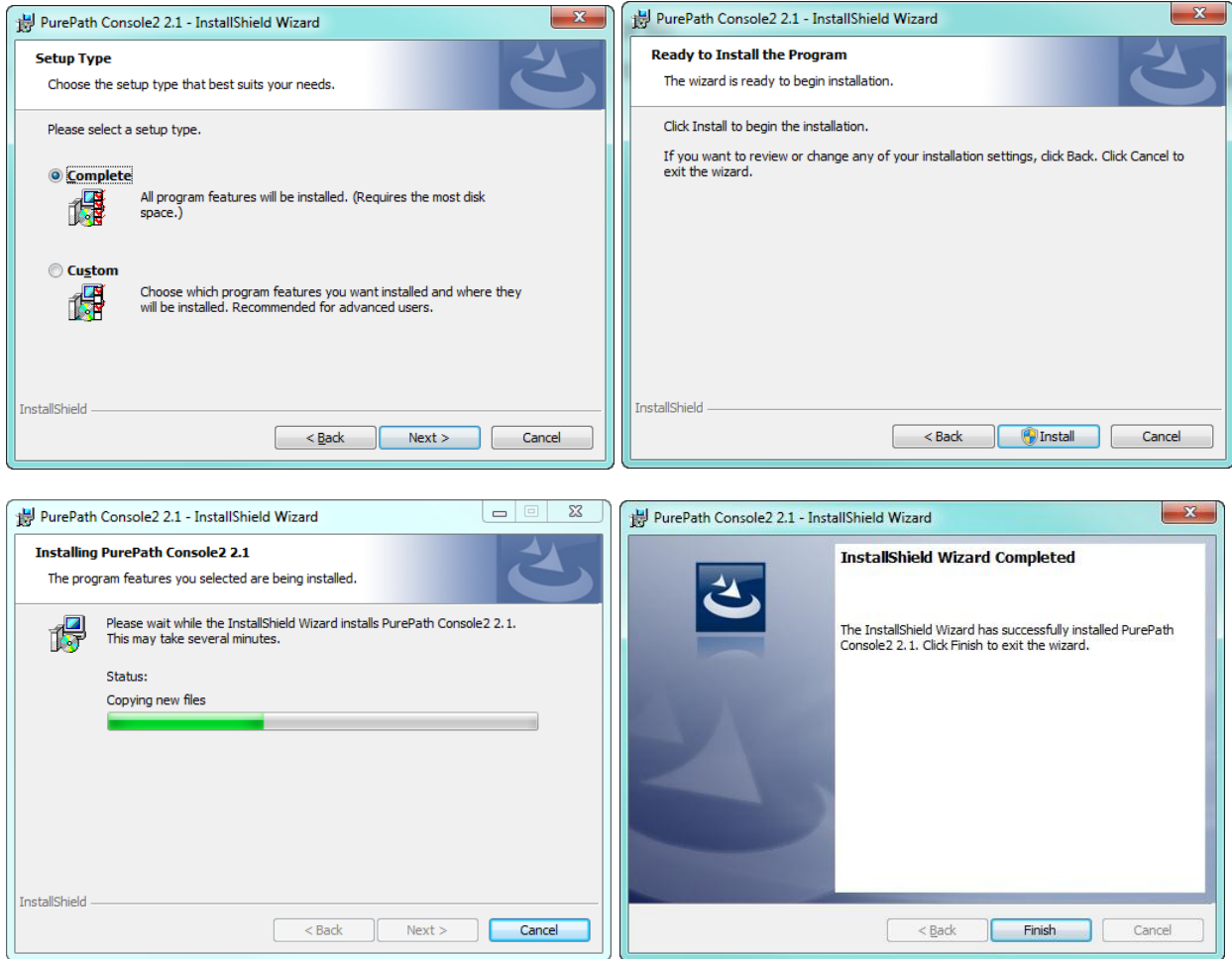
PurePath Console2 is installed by double-clicking the setup_PurePath_Console2_2.1_revXXXXX.exe where XXXXX is the revision number of the current build. As noted in the introduction, no plugins are included in the PurePath Console2 installer.

To automatically install plugins, please download them and place them in the same directory as the .exe when initiating an installation. See [1.1.2 Plugin Installation](#) for more detailed information.

1.1.1 Installer .exe Installation

The installation process has multiple screens, which follow the standard Windows installation process:

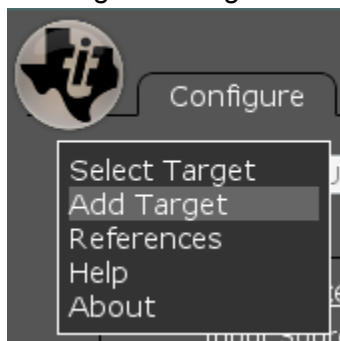




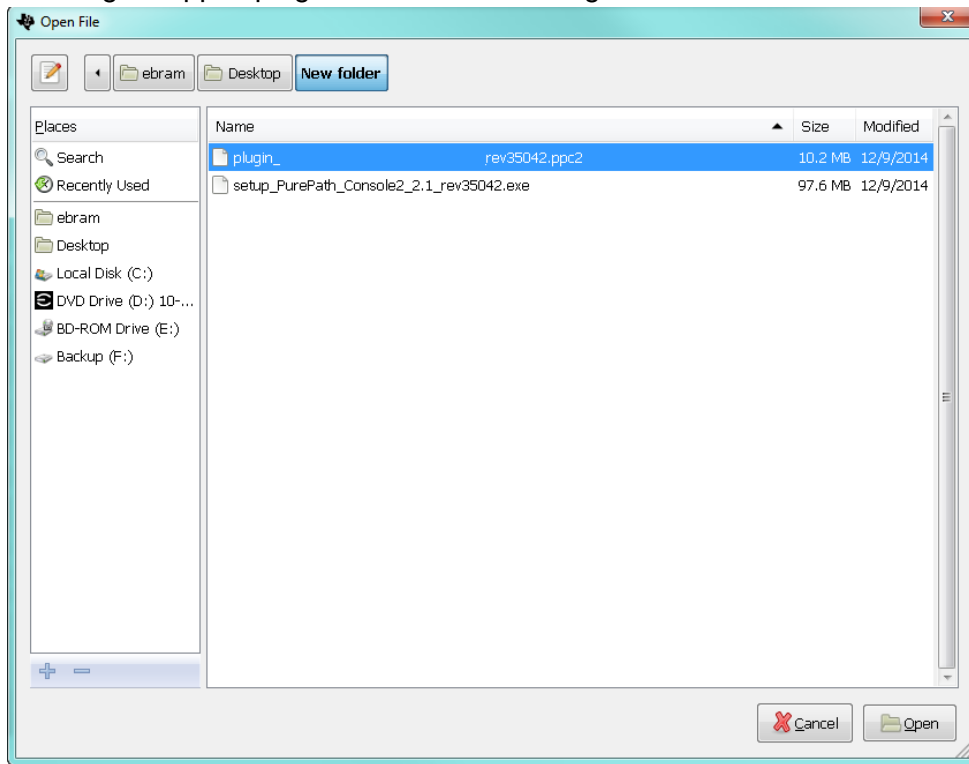
1.1.2 Plugin Installation

There are two ways to install a plugin:

1. If there are .ppc2 files in the same directory as the installer when the installer is launched, those target .ppc2 files will be automatically installed during the installation process.
2. Running PurePath Console2 and adding a target. This is achieved by:
 - Clicking the TI logo in the upper left corner and selecting “Add Target”



- Locating the .ppc2 plugin to be installed using the file browser



- Clicking “Open”. At this time, PurePath Console2 will automatically load this target if it is the only target available, or restart itself if multiple targets are installed.

1.2 Plugin Upgrade

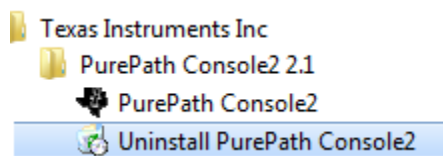
At this time, there is no mechanism for updating PurePath Console2 plugins alone— Instead, plugins are updated along with their respective installer. In order to update an installer or plugin, PurePath Console2 must first be uninstalled. Please follow [1.3 Uninstallation](#) for instructions on the uninstall procedure.

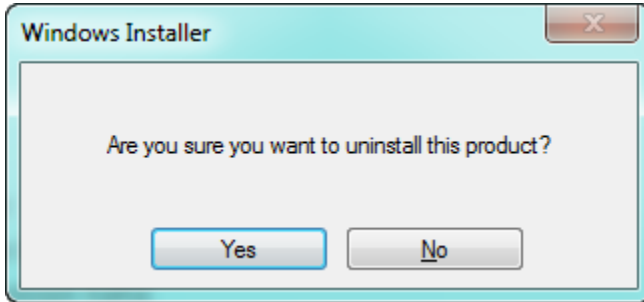
After the uninstall of the old version is complete, the new version of the installer and matching plugins may be installed using the standard installation method described in section [1.1 Installation](#).

1.3 Uninstallation

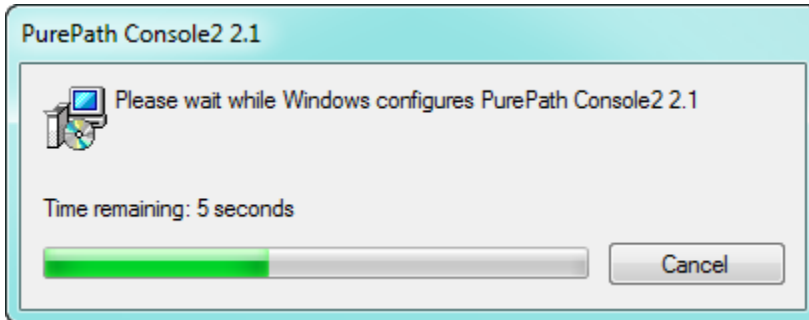
Uninstallation is done through the Windows start menu:

1. Select Texas Instruments Inc -> PurePath Console2 2.1 -> Uninstall PurePath Console2





2. Click "Yes"



3. Uninstallation finishes and is removed from the machine. This includes the removal of all of the target plugins that were present at the time of the uninstallation.